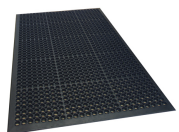


Anti-Fatigue

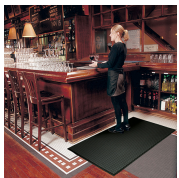
**M + A Matting Comfort Flow™ Mats**

A flow-through mat with excellent anti-fatigue properties designed for wet areas where grease, oil, and chemicals may be present. Drainage holes allow liquid to flow through. Lifetime anti-microbial treatment prevents odors and degradation of the mat. Beveled edges provide a safe transition from floor to mat. Certified high-traction by the National Floor Safety Institute (NFSI). High-density closed-cell nitrile rubber cushion provides excellent anti-fatigue qualities. Grease and oil proof, chemical resistant, welding safe. Lightweight flexible design ensures easy handling and cleaning.

451630023-EA	2' x 3'		ea
451630125-EA	3' x 5'		ea
451630039-EA	3' x 9'		ea
451630046-EA	4' x 6'		ea

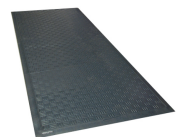


451301305-EA	3' x 5'	Black	ea
--------------	---------	-------	----

**M + A Matting Cushion Max Anti-Fatigue No Hole Mats**

Provides superior anti-fatigue properties for employee comfort and ergonomic benefits. Constructed of 100% Nitrile/PVC closed cell foam. Borders are beveled for safe egress. 5/8" thick; No holes. Slip resistant surface helps to reduce slip and fall accidents. Surface is more than twice as durable as traditional PVC foam mats. Ozone resistant.

451414305-EA	3' x 5'	Charcoal	ea
451414406-EA	4 x 6	Charcoal	ea

**M + A Matting Cushion Station™ Anti-Fatigue Mat w/o Holes**

Features nitrile foam designed to withstand grease, oil, and chemicals. They are anti-microbially treated to prevent odors. Comfortable 7/16" nitrile foam provides excellent anti-fatigue properties. Anti-microbial treatment provides lifetime protection from odors and degradation. Beveled edges provide a safe transition from the floor to the mat, certified high-traction by the National Floor Safety Institute (NFSI). Grease/oil proof, chemical resistant, welding safe. Flexible construction makes this mat easy to clean, can be autoclave sterilized.

451330370-EA	3' x 5'	w/o Holes	ea
--------------	---------	-----------	----



451900435-EA	3' x 5'	Black	ea
--------------	---------	-------	----

**M + A Matting Happy Feet® Anti-Fatigue - Tread Top**

Anderson's selection of Happy Feet™ mats combine exceptional anti-fatigue performance with unique safety features. Available Colors: Black, Safety Green, Caution Yellow, Warning Orange, Danger Red. Sizes Available: 2' x 3', 3' x 5', 3' x 10'.

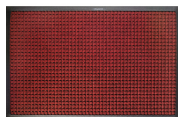
M + A Matting Hog Heaven® Anti-Fatigue Matting

Designed to provide comfort and durability in a variety of harsh conditions. High-density nitrile-blended cushion helps eliminate pressure to the lower back and legs, providing superior comfort. Certified high-traction by the National Floor Safety Institute (NFSI). Sloped edges provide a safe transition from floor to mat. Cushion is molded, not glued, to the nitrile rubber surface so it will not separate; edges will not crack or curl. Welding safe. ESD rating of eclectically conductive; chemical resistant; surface is grease/oil proof and cushion is grease/oil resistant. 5/8" or 7/8" thicknesses with solid black or with OSHA approved caution yellow borders on two sides.

451421203-EA	5/8", 2' x 3'	Black Border	ea
451421305-EA	5/8", 3' x 5'	Black Border	ea
451657231-EA	5/8", 3' x 5'	Black Border	ea
451422203-EA	7/8", 2' x 3'	Black Border	ea

Entrance Wiper And Scraper

M + A Matting Waterhog® Classic Mats



Durable, stain-resistant mats with a unique bi-level design that traps dirt and moisture, keeping your floors clean, dry, and safe. Features a classic waffle pattern. Water dam border holds moisture keeping it off your floors and can hold up to 1.5 gallons of water per square yard. Reinforced rubber nubs prevent pile from crushing and extend the performance life of the mat. Solution-dyed PET fabric is resistant to staining, dries quickly, and will not fade or rot. Certified high-traction by the National Floor Safety Institute (NFSI). Eco-Friendly SBR rubber backing contains 20% post-consumer recycled rubber from car tires; PET surface is made from 100% post-consumer recycled plastic bottles. Weight: 24 oz./yard². Construction: Needle-punched. Overall mat thickness: 3/8".

451200203-EA	2' x 3'	Charcoal	ea
451200304-EA	3' x 4'	Charcoal	ea
451200305-EA	3' x 5'	Medium Blue	ea
451200306-EA	3' x 6'	Charcoal	ea
451200310-EA	3' x 10'	Charcoal	ea
451200408-EA	4' x 8'	Charcoal	ea
451200410-EA	4' x 10'	Medium Blue	ea
451200418-EA	4' x 8'	Dark Brown	ea
451201305-EA	3' x 5'	Charcoal	ea
451234157-EA	3' x 4'	Medium Grey	ea
451248157-EA	4' x 8'	Medium Grey	ea
451747231-EA	4' x 6'	Charcoal	ea

M + A Matting Waterhog® Eco Elite Mats



Durable, stain-resistant mats with a unique bi-level design that traps dirt and moisture, keeping your floors clean, dry, and safe. Features an attractive herringbone pattern. Raised nubs remove dirt and moisture from shoes and trap it below foot level; water dam border holds up to 1.5 gallons of water per square yard, keeping your floors clean, dry and safe. Eco-friendly PET fabric (30 oz./sq yd) is made from 100% post-consumer recycled plastic from drink bottles, and SBR rubber backing contains 20% recycled rubber from car tires. Certified high-traction by the National Floor Safety Institute (NFSI). Fade and stain resistant solution-dyed PET fabric is resistant to staining, dries quickly, and will not fade or rot.

451224045-EA	4' x 5'	Black Smoke	ea
451224046-EA	4' x 6'	Black Smoke	ea



M + A Matting Waterhog® Eco Grand Premier Mats

A beautiful half oval mat that can be placed at either or both ends of the standard WaterHog Eco Elite or WaterHog Eco Premier mat to create an attractive and "grand" entrance to your facility. Raised nubs remove dirt and moisture from shoes, trapping it below foot level; water dam border holds up to 1 1/2 gallons of water per square yard. Reinforced rubber nubs prevent pile from crushing and extend the performance life of the mat. Fade and stain-resistant solution-dyed PET fabric (30 oz./square yard²) is resistant to staining, dries quickly, and will not fade or rot. Certified high-traction by the National Floor Safety Institute (NFSI). Eco-Friendly rubber backing contains 20% post-consumer recycled rubber from car tires; PET surface is made from 100% post-consumer recycled plastic bottles.

451224646-EA	6' x 33'	Black Smoke	Half Oval	ea
451800100-EA	Half Oval	Chestnut Brown		ea



M + A Matting Waterhog® Eco Premier Mats

Durable, stain-resistant mats with a unique bi-level design that traps dirt and moisture, keeping your floor clean, dry and safe. Attractive diamond pattern. Raised nubs remove dirt and moisture from shoes and trap it below foot level; water dam border holds up to 1 1/2 gallons of water per square yard, keeping your floors clean, dry and safe. Eco-Friendly PET fabric (30 oz./yard²) is made from 100% post-consumer recycled plastic from drink bottles, and SBR rubber backing contains 20% recycled rubber from car tires. Certified high-traction by the National Floor Safety Institute (NFSI). Reinforced rubber nubs prevent pile from crushing and extend the performance life of the mat. Fade and stain resistant solution-dyed PET fabric is resistant to staining, dries quickly, and will not fade or rot.

451748370-EA	3' x 4'	Black Smoke	ea
451748371-EA	3' x 5'	Black Smoke	ea
451295616-EA	4' x 8'	Black Smoke	ea
451743186-EA	4' x 8'	Black Smoke	ea
451295410-EA	4' x 10'	Black Smoke	ea
451295608-EA	6' x 8'	Black Smoke	ea
451743145-EA	3' x 5'	Chestnut Brown	ea
451748372-EA	3' x 10'	Grey Ash	ea
451748369-EA	4' x 6'	Grey Ash	ea
451295304-EA	3' x 4'	Indigo	ea
451229546-EA	4' x 6'	Indigo	ea

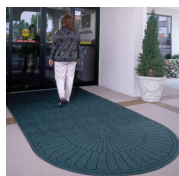
Matting



M + A Matting Waterhog® Fashion Border Mats

Durable, stain-resistant mats with a unique bi-level design that traps dirt and moisture, keeping your floors clean, dry, and safe. Features a classic waffle pattern. Water dam border holds moisture keeping it off your floors and can hold up to 1.5 gallons of water per square yard. Reinforced rubber nubs prevent pile from crushing and extend the performance life of the mat. Solution-dyed PET fabric is resistant to staining, dries quickly, and will not fade or rot. Certified high-traction by the National Floor Safety Institute (MFSI). Eco-Friendly SBR rubber backing contains 20% post-consumer recycled rubber from car tires; PET surface is made from 100% post-consumer recycled plastic bottles.

451280406-EA	4' x 6'	Charcoal	ea
451280412-EA	4' x 12'	Charcoal	ea



M + A Matting Waterhog® Grand Diamond Mats

Features a beautiful half oval mat that can be placed at either or both ends of the standard WaterHog Diamond mat to create an attractive and "grand" entrance to your facility. Bi-level surface effectively scrapes dirt and moisture from shoes, trapping it beneath shoe level to prevent tracking; water dam border holds moisture keeping it off your floors and can hold up to 1 1/2 gallons of water per square yard. Reinforced rubber nubs prevent pile from crushing and extend the performance life of the mat. Fade and stain resistant solution-dyed fabric is resistant to staining, dries quickly, and will not fade or rot. Certified high-traction by the National Floor Safety Institute (NFSI). Eco-Friendly rubber backing contains 20% post-consumer recycled rubber from car tires.

451200409-EA	4' x 8'	Evergreen	Two End	ea
--------------	---------	-----------	---------	----



M + A Matting Waterhog™ ECO Elite Fashion Mats

Durable, stain-resistant mats with a unique bi-level design that traps dirt and moisture, keeping your floors clean, dry, and safe. Features an attractive herringbone pattern. Raised nubs remove dirt and moisture from shoes and trap it below foot level; water dam border holds up to 1.5 gallons of water per square yard, keeping your floors clean, dry and safe. Eco-friendly PET fabric (30 oz./sq yd) is made from 100% post-consumer recycled plastic from drink bottles, and SBR rubber backing contains 20% recycled rubber from car tires. Certified high-traction by the National Floor Safety Institute (NFSI). Fade and stain resistant solution-dyed PET fabric is resistant to staining, dries quickly, and will not fade or rot.

451241618-EA	Waterhog® Eco Elite Fashion	ea
--------------	-----------------------------	----



M + A Matting Waterhog™ Eco Grand Elite Mats

A beautiful half oval mat that can be placed at either or both ends of the standard WaterHog Eco Elite or WaterHog Eco Premier mat to create an attractive and "grand" entrance to your facility. Bi-level surface effectively scrapes dirt and moisture from shoes, trapping it beneath shoe level to prevent tracking; water dam border holds moisture keeping it off your floors and can hold up to 1 1/2 gallon of water per square yard. Reinforced rubber nubs prevent pile from crushing and extend the performance life of the mat. Fade and stain-resistant solution-dyed PET fabric (30 oz./square yard²) is resistant to staining, dries quickly, and will not fade or rot. Certified high-traction by the National Floor Safety Institute (NFSI). Eco-Friendly rubber backing contains 20% post-consumer recycled rubber from car tires; PET surface is made from 100% post-consumer recycled plastic bottles.

451243459-EA	One End	ea
451243460-EA	One End Black Smoke One End	ea



M + A Matting Waterhog™ Eco Premier Fashion Mats

Durable, stain-resistant mats with a unique bi-level design that traps dirt and moisture, keeping your floor clean, dry and safe. Attractive diamond pattern. Raised nubs remove dirt and moisture from shoes and trap it below foot level; water dam border holds up to 1 1/2 gallons of water per square yard, keeping your floors clean, dry and safe. Eco-Friendly PET fabric (30 oz./yard²) is made from 100% post-consumer recycled plastic from drink bottles, and SBR rubber backing contains 20% recycled rubber from car tires. Certified high-traction by the National Floor Safety Institute (NFSI). Reinforced rubber nubs prevent pile from crushing and extend the performance life of the mat. Fade and stain resistant solution-dyed PET fabric is resistant to staining, dries quickly, and will not fade or rot.

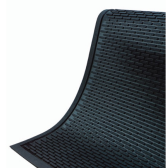
451748448-EA	4' x 8'	Black Smoke	ea
451297612-EA	6' x 12'	Black Smoke	ea
451229746-EA	4' x 6'	Chestnut Brown	ea
451748368-EA	3' x 5'	Maroon	ea

M + A Matting Waterhog™ Premier Mats

Combines all of the performance features of our original Waterhog with a unique diamond-shaped face pattern creating the ultimate visual appearance. Features a 36 ounce heavy duty multi-denier face yarn that is 50% heavier than the Waterhog Classic. The multi-fiber construction combines thick fibers for scraping with fine fibers for wiping, providing better performance and longer life. Face: Molded reinforced textile, Heavy 36 ozs./sy. 3/8" Pile height. SBR Rubber. Face: Molded reinforced textile, Heavy 36 ozs./sy. 3/8" Pile height; SBR Rubber.

451748449-EA	4' x 8'	Black Smoke	ea
--------------	---------	-------------	----

Entrance Scraper



M + A Matting 450 SuperScape™ Mats

Durable 100% nitrile rubber mat provides a slip-resistant surface. Ideal for use outside of entrances, in production areas, in kitchens and locker rooms. Molded tread-surface face cleats effectively scrape tough dirt and grime off shoes. Certified slip resistant by the National Floor Safety Institute.

451620115-EA	2 1/2' x 3'	ea
451620118-EA	3' x 5'	ea
451620143-EA	3' x 10'	ea
451620125-EA	4' x 6'	ea

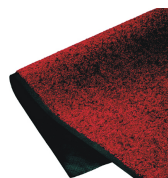


M + A Matting Victory™ Indoor Mats

Multi-directional design is absorbent and highly effective for scraping off soil and trapping it within recessed grooves. Fast drying heavyweight polypropylene looks better, longer. Attractive designer colors. Smooth non-skid vinyl backing. Not launderable. Designed to release dirt easily with daily vacuuming, or can be cleaned with any commercial carpet cleaning system.

451100310-EA		Victory™ Interior Mat	ea
451103102-EA	3' x 5'	Brown	ea
451873350-EA	3' x 5'	Charcoal	ea
451153154-EA	3' x 10'	Charcoal	ea
451873460-EA	4' x 6'	Charcoal	ea

Entrance Wiper



M + A Matting Tri-Grip™ Indoor Mats

Heavy, 100% static dissipative nylon face offers outstanding absorption and durability. Tight, heat-set, Ultra-Twist™ yarn construction resists packing and crushing. Dirt filters into the mat rather than remaining on top. Green friendly rubber backing has 10%-15% recycled content. Resists curling and cracking. Certified slip resistant by the National Floor Safety Institute.

451750235-EA	3' x 5'	Navy	ea
451750246-EA	4' x 6'	Navy	ea

Slip Resistant Backing System

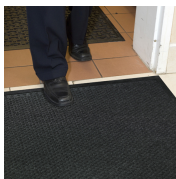


M + A Matting Impressionist Indoor Mats

Durable, continuous filament olefin yarn is colorfast and resists stains. Dense pile yarn holds over two gallons of moisture/sq yd. Attractive colors hide soil and complement surroundings. Smooth non-skid vinyl backing. Not launderable. Designed to release dirt easily with daily vacuuming, or can be cleaned with any commercial carpet cleaning system.

451871304-EA	3' x 4'	Black	ea
451871350-EA	3' x 5'	Black	ea
451871310-EA	3' x 10'	Black	ea
451871461-EA	4' x 6'	Black	ea
451871408-EA	4' x 8'	Black	ea

Specialty



M + A Matting Grease Hog Scraper/Wiper Indoor Mats

Solution-dyed polypropylene fabric will not fade or rot. Grease proof nitrile rubber backing. Permanently molded bi-level pattern on the carpet surface prevents pile from crushing and provides an anti-slip surface. Low profile fabric construction ensures easy cleaning and quick drying. Low profile reinforced borders ensure mat will lay flat and will not crack and break while allowing carts to cross easily. Unique disk pattern on back of mat keeps it in place on hard floor surfaces. Perfect for use in kitchens to stop oil and grease from being tracked into the dining rooms causing stained floors and slip and fall hazards. 1/4" thick.

4513X5883-EA

3' x 5'

ea