

## Auto & Walk Behind Scrubbers



7621231845-EA

### Nobles® i-mopXL® Scrubber

The performance of a scrubber with the mobility of a mop. Dramatically reduces water and chemical consumption. Power rating: 700 W; Clean water tank: Gal. (4 L). Recovery watertank: 2 Gal. (8 L); Brush pressure: 49.6 lb. Battery: (2) Lithium-ion 25.2 V 8.8 AH.

18.1"

8.8 AH

ea



7629016402-EA

### Nobles® i-mopXL® Scrubber w/2 Battery Sets

The performance of a scrubber with the mobility of a mop. Dramatically reduces water and chemical consumption. Power rating: 700 W; Clean water tank: Gal. (4 L). Recovery watertank: 2 Gal. (8 L); Brush pressure: 49.6 lb. Battery: (2) sets of Lithium-ion 25.2 V 8.8 AH.

18.1"

8.8 AH

ea



762900420-EA

### Nobles® Speed Scrub® 15" Walk-Behind Scrubber

Remove even the toughest grime with the cylindrical brush system's 33 lb of focused down pressure and 1200 rpm brush speed. Cord electric. Solution/Recovery tanks: 3 Gal./4.5 Gal. Scrub Motor: 0.4 hp; Vacuum Motor: 1.2 hp. 120V, 50/60 Hz, 86" waterlift, 99 cfm airflow.

15" Cylindrical

ea



7629008637-EA

7629008640-EA

### Nobles® Speed Scrub® 15" Battery Scrubbers

Cordless design for safety and cleaning flexibility. Eliminates cord hazards and constraints for easy cleaning any time of day. Recharge battery multiple times a day. AGM battery provides up to 45 minutes of high performance cleaning which is best suited to single daily use. Lithium-ion batteries provide up to 60 minutes of run time, thrive on multiple use/charge applications and are lighter and provide longer run time than standard batteries. Perfect for convenience stores, check out aisles, food prep areas and quick clean-ups anytime. Compact and quiet for use in patient rooms. Scrub motor: 0.65 hp, 900 rpm (@ brush). Brush down pressure: 38 lb., Brush size: 3.5". Vacuum fan: 1-stage, 0.5 hp; Sealed water lift: 25".

AGM Battery

ea

Lithium-Ion Battery

ea



### Nobles® Speed Scrub® 300 Walk-Behind Scrubbers

Durable components extend machine life and reduce cost of ownership. Effective scrubbing capabilities for cleaner floors in fewer passes. Outstanding water pick-up for reduced slip and fall accidents. Minimize water consumption with optional ec-H2O NanoClean™ technology. Quiet 67 dBA noise level. Optional Insta-Click™ head for easy, low-touch pad attachment and removal. Squeegee design helps ensure dirt and soils are removed from the floor for minimum risk of slip-and-fall accidents.

Solution tank: 11 gal.; Recovery tank: 14 gal.

76217SS300CDN-EA

17", Disk

105AH, 3-Lug Pad Driver

ea

762SS3PSLW-EA

20", Disk

105AH, 3-Lug Pad Driver

ea

762SS3DXMW-EA

20", Disk

130AH, Insta-Click

ea

763SS3DXMA-EA

20", Disk, ec-H2O

130AH, Quick-Click

ea



### Nobles® Speed Scrub® 300 Walk-Behind Scrubbers

Durable components extend machine life and reduce cost of ownership. Effective scrubbing capabilities for cleaner floors in fewer passes. Outstanding water pick-up for reduced slip and fall accidents. Minimize water consumption with optional ec-H2O NanoClean™ technology. Quiet 67 dBA noise level. Optional Insta-Click™ head for easy, low-touch pad attachment and removal. Squeegee design helps ensure dirt and soils are removed from the floor for minimum risk of slip-and-fall accidents.

Solution tank: 11 gal.; Recovery tank: 14 gal.

762S3DPMLA-EA

24", Disk, ec-H2O

150AH, Quick-Click

ea



### Nobles® Speed Scrub® 300 Walk-Behind Scrubbers

Durable components extend machine life and reduce cost of ownership. Effective scrubbing capabilities for cleaner floors in fewer passes. Outstanding water pick-up for reduced slip and fall accidents. Minimize water consumption with optional ec-H2O NanoClean™ technology. Quiet 67 dBA noise level. Optional Insta-Click™ head for easy, low-touch pad attachment and removal. Squeegee design helps ensure dirt and soils are removed from the floor for minimum risk of slip-and-fall accidents.

Solution tank: 11 gal.; Recovery tank: 14 gal.

762SS300ORB-EA

20", Orbital

150AH

ea

# Cleaning Equipment



## Nobles Speed Scrub® 500 Walk-Behind Floor Scrubbers

Clean virtually any hard surface condition to maximize return on investment with a wide range of cleaning options and configurations. Effectively remove floor finish without expensive stripping chemicals with the 28" orbital cleaning head option, which includes a 2,000 hour/3-year isolator warranty. Reduce risk of slips and falls with redesigned squeegee and integrated p trap that improves water pick-up and prevents water drips after cleaning. Provides the right solution for your application with its versatile design, easy to use controls and durable components. Water lift: 34"; System voltage: 24 V.

762MVSS500-EA	26" Disk	ea
762SS500650D-EA	26" Disk	ea
762SS500700D	28" Dual Disk	ea
762SS500800D	32" Disk	ea



## Nobles Speed Scrub® 500 Walk-Behind Floor Scrubbers

Clean virtually any hard surface condition to maximize return on investment with a wide range of cleaning options and configurations. Effectively remove floor finish without expensive stripping chemicals with the 28" orbital cleaning head option, which includes a 2,000 hour/3-year isolator warranty. Reduce risk of slips and falls with redesigned squeegee and integrated p trap that improves water pick-up and prevents water drips after cleaning. Provides the right solution for your application with its versatile design, easy to use controls and durable components. Water lift: 34"; System voltage: 24 V.

762SS500700C	28" Cylindrical	ea
--------------	-----------------	----



## Karcher® BD 30/4 C BP Compact Scrubber

Designed for busy areas and daytime operation. Right-size for cleaning tight, congested areas. Vacuum working width of 13". Motor rating: 240 W; Brush contact pressure: 22 lbs. Capacity fresh/dirt water: 0.8Gal./1.1. Charger: 120V 60 Hz; Weight: 44 lbs w/accessories.

10468200	11" Disc Brush	ea
----------	----------------	----



## Karcher® BR 30/4C Upright Automatic Floor Scrubber

Provides a far more efficient and hygienic alternative to manual mopping and scrubbing. Ideal for use on hard floors and tile. Brush: one 12" cylindrical, 2.4" diameter, 1550 rpm speed. Working Width: 12". Vacuum Motor: 1.1 hp; 32.8' power cord.

762783221-EA		ea
--------------	--	----



## Karcher® BR 35/12 BP Pack Scrubber Drier

Agile, lightweight, quiet. Fast rechargeable, high-performance lithium-ion battery. Rotating brush head. KART and roller technology and ecoefficiency mode. Brush working width: 350mm; Vacuum working width: 450mm. Power rating: 500 W; Battery: 21AH; Battery voltage: 25.2. Fresh/Waste water tank: 12 liter/12 liter.

762783454-EA		ea
--------------	--	----



## Karcher® BR 40/10 Upright Automatic Floor Scrubber

Will thoroughly deep-clean all your hard floor surfaces then leave them perfectly dry, safe and hygienic. Voltage: 120V; Power cord: 50'; Sound level: 67 dB(A). Solution tank: 2.64 gal.; Recovery tank: 2.64 gal. Cleaning brush speed: 1,100 rpm; Weight: 66 lb.

762783312-EA	16"	ea
--------------	-----	----



## Karcher® BD 40/12 C Bp Walk Behind Scrubber

The compact, battery-driven scrubber is an innovative and powerful alternative for manual cleaning of smaller and medium sized areas. 33 AH battery. Tank fresh/dirty water: 3.17 gal./3.17 gal.; Brush: 148RPM. Working width (brushes): 15"; Working width (vacuum): 18". Motor rating (brushes): 250W; motor rating (vacuum): 300W.

762512743-EA	16"	33 AH	ea
--------------	-----	-------	----



## Karcher® BD 43/25 C Bp Scrubber w/Wet Batteries

Compact size provides a good overview and makes it very agile. The user-friendly easy operation panel is intuitive and makes operator training easy and fast. Motor rating: 1100 W; Running time battery: 2 hour. Battery voltage: 24V; Fresh/waste water tank: 6.6/9.2 gal. Brush rotation speed: 180 rpm; Weight: 105 lbs.

7629512811-EA	17" Disc	Wet Batteries	ea
---------------	----------	---------------	----

# Cleaning Equipment



## Karcher® B40 Walk Behind Floor Scrubbers

This scrubber has a tank-in-tank system that gives the operator full access to the water recovery tank making the unit compact and maintenance friendly. KIK system (Karcher Intelligent Key) allows managers and service technicians access to functions that operators do not need. The operator simply inserts the key and starts cleaning, everything is preset no adjustments needed, saving time, money and aggravation. The most versatile, full-featured scrubber on the market today. Solution tank: 10.6 gal.; Recovery tank: 10.6 gal. Noise level: 59.7 to 68.6 dB(A); On-board charger. Weight: 255 lbs w/batteries; Squeegee assy w/blade: 35".

762512692-EA

22" Traction

105AH AGM

ea



## Karcher® B 40 C Bp Classic Floor Scrubber

A versatile basic version of the B 40 C/W Bp. Simple operation. Can be ordered with either 17" or 20" disk heads or 18" or 22" cylindrical heads. Brush speed: (D head): 180 rpm; (R head) 1400 rpm. Brush pressure (R head): 31 - 40 lbs.; Squeegee: 35". Solution/recovery tank capacity: 10.6 gallons.

762512749-EA

ea



## Karcher® BD 50/50 C Classic BP Walk Behind Floor Scrubbers

This economically-designed scrubber provides you all the cleaning power to take on large applications, perfect for retail environments, schools and health care facilities. Rigid brush handle enables easy switch from brush to pad. Easy change out brushes with T-handle. Simple to handle and operate. 3 modes of cleaning; Normal mode for scrubbing and vacuuming, Intense mode for scrubbing only, and Vacuum mode for vacuum only. Compact slim profile design. Easily attach manual cleaning tools for quick touch ups and less visits to the supply closet. Dial-adjustable squeegee. Brush width: 20"; Vacuuming width: 20". Power rating: 1100 W; Water flow max: 1.60 gpm.

762512790-EA

20"

130AH

ea



## Karcher® B 60 W Bp Floor Scrubber

Slim line design. Choice of 22" or 26" roller brush with integrated presweep or 22" or 26" disc head. Solution tank: 15.9 gal.; Recovery tank: 15.9 gal. Noise level: 65.6 dB (A); Weight: 660 lbs. Squeegee assm.: 35" or 38.5"; 50.9" L x 24" W x 45.2" H.

762512724-EA

230 AH AGM

ea



10271400

230AH

ea



762706572-EA

16"

Pad Driver

ea

## Karcher® B80 W Bp Floor Scrubber

Designed to simplify operation and to deliver high performance. Cleaning width: 26" or 30". Solution tank: 21 Gal.; Recovery tank: 21 Gal. Squeegee assembly: 37" or 41.7".

## NaceCare™ TTB516 Twintec Compact Scrubber

With 45-60 minutes of run time an interchangeable battery pack and 5-gallon solution capacity, it is the professional choice in compact auto-scrubbers. Pad Driver size: 16"; Brush pressure: 55 lbs. Brush speed: 200 rpm; Brush motor: 400W. Vacuum motor power: 300W; Battery: 18AH, 12V gel.



762706575-EA

16"

Brush

ea

## NaceCare™ TTB516 Twintec Compact Scrubber

With 45-60 minutes of run time an interchangeable battery pack and 5-gallon solution capacity, it is the professional choice in compact auto-scrubbers. Brush size: 16"/16"; Brush pressure: 55 lbs. Brush speed: 200 rpm; Brush motor: 400W. Vacuum motor power: 300W; Battery: 18AH, 24V gel.



762907365-EA

17"

70 AH Gel

ea

## NaceCare™ Henry HGB 817 Walk Behind Scrubber

Pad assist walk behind scrubber. Compact and easy to transport. Safe, dependable, gel batteries. Fully adjustable handle for operator comfort. Runtime: 2-2.5 hour. Tank: 8 Gal.; Batteries: 2 x 12V 70AH. Easy to use controls. On board charger.



762847000-EA

13.5"

ea

## Betco® MotoMop™ Cleaning Machine

The small area cleaning machine. Cleans faster, better, safer. 360 motion to clean in all directions. Adjustable handle height. Solution flow on/off. Weight: 22 lbs.; Battery: Li-ion; Brush diameter: 4.3". Brush motor: 50W; Brush system: cylindrical. Charger: Stand alone.

## Auto & Walk Behind Scrubber Accessories



818763004-EA

ea

## Karcher® Brush Head R65 for B80 W Bp, B60 W Bp & B 90 R

Brush head R 65 only. Cylindrical 26".

# Cleaning Equipment



818763026-EA

ea

**Karcher® D51 20" Disk Brush Head  
For B 40 Scrubber**



8182763007-EA

ea

**Karcher® R90 Roller Brush Head for  
B140R**

Brush head R 90 only. 36" roller brush with side skirts and sweeping ability.

**Tennant Driver Assembly, Pad, 50cm, Brush,  
Magnetic**

Where used: A300, SS300, Speed Scrub 350, T300, T300e, T350.

8051209197-EA

ea

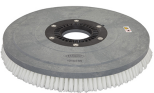


8051023327-EA

ea

**Tennant Front Squeegee Blade  
1109L Red Linatex**

Fits: A5, T5e, Speed Scrub (24-32"), T5, A5.



8051210386-EA

ea

**Tennant Nylon Brush For  
Insta-Click™ Scrub Head**  
For T300E scrubber.



8051023329-EA

ea

**Tennant Rear Squeegee Blade  
98CML Red Linatex**

Fits: A5, T5e, Speed Scrub (24-32"), T5, A5.

## Auto Scrubbers - Riders



**Nobles® Speed Scrub® 350  
Stand-On Floor Scrubbers**

Maximize machine usage with up to 94 minutes between dumps and fill cycles and up to 4 hours of battery run time. Reduce the risk of slip-and-fall accidents with advanced squeegee design. Incorporate daytime cleaning with Quiet-Mode™ that reduces machine noise levels to as low as 59.7 dBA. Ensure operator comfort and control with ergonomics and easy-to-use steering and controls. Smart-Fill™ automatic battery watering system makes battery maintenance safer by removing the task of checking, opening and filling flooded batteries. Clean over 30,000 square feet per hour without sacrificing performance. Drive motor: 24 VDC, 0.64 HP; Vac motor: 24 VDC, 0.62 HP.

763100547-EA	20" Disk	210AH, Quiet Mode, Smart-Fill	Each
762S35024DMSL-EA	24" Disk	210AH, Quiet Mode, Smart-Fill	ea



**Nobles® Speed Scrub™ Micro-Rider  
Scrubbers**

Easy to learn, one button controls decrease the time spent training, and shifts it to more time spent cleaning. Choose either disk for smooth floors with out debris or cylindrical scrub heads for capturing light debris. Just scrubbed floors are immediately dry and safe for traffic and detergent is automatically mixed and measured precisely with optional FaST®. Also available with ec-H2O™. With ec-H2O™ option, you'll use 70% less water than conventional scrubbing methods. Detergent clean. Water safe. ec-H2O technology converts water into a powerful cleaning solution. 29 gallon solution and recovery tanks.

7639006086	32"	Disk w/ec-H2O™	ea
------------	-----	----------------	----



**Nobles® Speed Scrub™ Micro-Rider  
Scrubbers**

Easy to learn, one button controls decrease the time spent training, and shifts it to more time spent cleaning. Choose either disk for smooth floors with out debris or cylindrical scrub heads for capturing light debris. Just scrubbed floors are immediately dry and safe for traffic and detergent is automatically mixed and measured precisely with optional FaST®. Also available with ec-H2O™. With ec-H2O™ option, you'll use 70% less water than conventional scrubbing methods. Detergent clean. Water safe. ec-H2O technology converts water into a powerful cleaning solution. 29 gallon solution and recovery tanks.

7629001975-EA	32"	Cylindrical w/FaST®	ea
---------------	-----	---------------------	----



# Cleaning Equipment



762512765-EA

## Karcher® B 140 R Bp Ride On Scrubber

Exchangeable head to match different flooring types. Mid-size rider. Cleaning width: 30"/36"; Brush motor: 2 x 600 watts. Solution tank: 37 Gal.; Recovery tank: 37 Gal. Drive motor: 600 watts; Squeegee width: 37".

30"

300 AH

ea



762512759-EA

## Karcher® B 150 R Bp Ride-On Scrubber

The perfect ride-on scrubber for cleaning medium sized surfaces up to 48,450 ft<sup>2</sup>. Very compact and highly maneuverable with a good all round view. Solution tank: 40 gallon; Recovery tank: 40 gallon. Cleaning brushes: 2; Volt: 36V; Squeegee width: 42". Cleaning brush speed: Disk 180 rpm, roller 60-1300 rpm.

330 AH AGM

ea

## Blowers



774614277-EA

## Nobles® Blower

Compact, stackable three-speed blower dries areas quickly. Produces up to 2500 cfm. Can be placed in three positions for optimal directional airflow. Blower Motor: 0.5 hp, 4.8 amps at top speed. Power Cord: 20'. 18" H x 17" W x 19" L; Weight: 32 lb.

ea



774004053-EA

## Karcher® AB 84 CUL Air Blower

A powerful mobile dehydration machine made for use after spray extraction cleaning. With its ergonomic handle and wheels it is easily transportable. Air flow rate (level 1/2/3) (m<sup>3</sup>/min): 56/70/84. Motor rating (level 1/2/3) (rpm): 1050/1350/1600. Power rating (W): max 700; Length of cord access: 20".

ea



774107596-EA

## ProTeam® ProBlitz™ XP Airmover

Maximum airflow and low amp draw combine to make this airmover the first choice for carpet cleaners and restoration contractors. Motor: .4 hp/360 watt/capacitor start and run. Amp: Low; 2.4 A, Medium; 2.7 A, High; 3.0A. Airflow: 2200 CFM (max).

ea

## Burnishers



7581000150-EA

## Nobles® UltraShine™ Dust Control Burnisher

High speed dust control burnisher. Free floating head for even results on irregular floors. Easy to burnish hard-to-reach areas with low profile base. 2000 RPM; 1.5 HP. Pad Driver: 19"; Cord: 75 ft.; Cloth filter. Construction: Polyethylene.

20"

ea



## Karcher® BDP 51 Commercial-Duty High Speed Burnishers

Engineered with a fully-adjustable handle system. Each is designed with a built-in circuit breaker and fuse system to protect the motor. Its rugged cast aluminum base and switch housing and non-marking bumper help to protect the machine as well as your facility. Each comes with 4-5" non-marking caster wheels for easy transport around the work site. The BDP51/2000C is equipped with a dust control system. Foot latch easily releases the handle to a floating position, to simplify operation. Dual levers and safety interlock for left or right-handed operations.

758840470-EA

1500 rpm

ea

758840468-EA

2000 rpm

ea



7589003538-EA

## Nobles® SpeedGleam® 5 Walk-Behind Burnishers

Ultra quiet machines, as low as 63 dBA, ensures safe sound levels. Passive dust control as standard, maintains indoor air quality. 90 degree flip up head, enables a safe ergonomic position when changing pad. Battery powered. High gloss results in an ultra quiet, ergonomic design. Pad motor: 36V, 75 A, 2.8 hp max; Pad speed: 2300 rpm. Passive filtration: 95% @ 0.3 microns.

Pad Assist

ea

# Cleaning Equipment



## Betco® Optima QT Propane Burnishers

Designed by Betco to provide the ultimate in high-gloss shine, when burnishing Betco Floor Finishes. Kawasaki's powerful 585 CC V-Twin 17 HP engine on a cast aluminum deck performance assure productivity and durability are assured. High quality and durable components such as low emission catalytic muffler, low oil shutdown, auto shutdown, 12V battery start and more insure dependability. Ergonomically designed handle easily adjusted for enhanced operator comfort and reduced fatigue. A 17 hp Kawasaki engine delivers the necessary power to maintain high speed floor finishes. Use for dry burnishing or restorative burnishing. Catalytic muffler. Auto shutoff. Automatic shutdown oil safety system.

75888052-EA

21" w/Clutch

ea



## Pioneer Eclipse® Mean Machine® MM21K3NS Burnisher

110V start. RokBak™ deck for easy access pad installation from a standing position. Powder-coated, cast aluminum alloy deck for long, trouble-free life. 431 cc Kawasaki, OHV v-valve engine. Catalytic muffler. Low profile design for easy maneuverability.

758MP21K3C-EA

21"

ea



## Pioneer Eclipse® Mean Machine® Propane Burnishers

Available in various sizes. 110V start. RokBak™ deck for easy access pad installation from a standing position. Powder-coated, cast aluminum alloy deck for long, trouble-free life. 585 cc Kawasaki, OHV v-valve engine. Catalytic muffler. Low profile design for easy maneuverability.

758MB24K7CSFV-EA

24"

ea

## Extractors



## Nobles® EX-SPOT-2 Portable Spot Extractor

Clean spots before they become stains with the portable spot extractor. Includes 4" stainless steel hand tool. Vacuum motor: 1.12 hp, 2 stage, 120V, 7A, 840 watts. Vacuum motor type: Peripheral discharge, bypass: 4.8 dia. Power cord: 25' SJTO.

756609235-EA

2 Gal.

ea



756611459-EA

10.5"

ea



7569007486-EA

7709007486-EA

ea

ea



7569007482-EA

20"

ea



7569004201-EA

5 Gal.

ea



## Nobles® EX-SC-412 Self-Contained Extractor

The lift-off recovery tank on this extractor lets the operator empty the tank into a drain or sink with ease. Vacuum motor: 1.5 hp, 2-stage. Water lift at sealed orifice: 91.5". Power Cord: 25', 16 gauge.

## Nobles® EX-SC-1020 Self Contained Extractor

This carpet extractor allows for the exact amount of agitation to remove tough soil without causing damage. Vac Motor: 1.8 hp, 3-stage. Brush Motor: 1.5 A. Power Cord: 50', 16 gauge, safety yellow.

## Nobles® EX-SC-1020P Self-Contained Extractor

This extractor employs manual push operation and allows the operator to clean carpet faster than a traditional "pull back" extractor. Vacuum motor: 1.8 hp, 3-stage. Water lift at sealed orifice: 137". Power Cord: 75', 16 gauge, safety yellow.

## Nobles® Speed EX™ Self-Contained Extractor

Deep clean in one pass thanks to dirt-lifting, double-tuft brush and powerful extraction system. Easily reach into tight spaces with ultra low-profile design. Solution/recovery tanks: 5 Gal./5Gal. Vacuum motor: 1.2 hp. 10.8 amps, 120V, 1300 watts.

## Nobles® Explorer™ Canister Extractors

Increase productivity with more time spent extracting and fewer dumps with a large 16 gallon solution/ recovery tank. Built for durability with roto-mold double walled construction for outstanding performance and a longer life. Easy to grip handles allow for quick transportation to clean more spaces. CRI gold certified cleaning when used with Exodus Titanium Wand. CRI platinum certified as part of a deep cleaning system using Orbio® Multi-Surface Cleaner. Solution tank: 15 Gal.; Recovery tank: 13.5 Gal.; Solution/recovery hose length: 15'.

7569011451-EA	120 PSI, Heated	w/SS Wand & Hoses	ea
7569011639-EA	220 PSI, No Heat	w/SS Wand & Hoses	ea
7569011453-EA	220 PSI, Heated	w/SS Wand & Hoses	ea
7569012277-EA	220 PSI, Heated	w/Titanium Wand & Hoses	ea
10292400	500 PSI, Heated	w/Titanium Wand & Hoses	ea



## Nobles® Strive® Compact Cord-Electric Carpet Cleaner

With ReadySpace®. Easily reach and clean tight areas with forward and reverse cleaning action, low-profile body, and Insta-Adjust™ handle. Solution/Recovery Tanks: 5 Gal./5Gal. Roller motor power (2 motors): .3 hp. 11 amps, 120V, 1320 watts.

7569004202-EA

15"

ea



## Nobles® Strive™ Dual Technology Carpet Cleaner

ReadySpace™ technology removes soil before it becomes deeply embedded, leaving carpets cleaner over time and making extraction easier. Carpets cleaned with the Strive's ReadySpace® technology are dry and ready for foot traffic in less than 30 minutes. 42" H x 60" L x 28" W. 21 gallon solution and recovery tanks.

7569000503-EA

22"

235 AH

ea



## Karcher® Puzzi 30/4 Spray Extraction Cleaner

The economical cleaning solution for large carpet surfaces and makes cleaning ergonomic, stress-free and quick. Air flow: 157; Waterlift: 85; Power: 10A. Spray pressure/ram pressure (bar): 4. Spray rate (GPM): 0.78/3; Waste water tank: 4 gal.

765101126-EA

ea



## Karcher® Puzzi 100 Spray Extraction Cleaner

The perfect sized extractor for offices, hotel-motel rooms, entrances and emergency spot cleaning in any facility. Vacuum motor: 1100 watt; Air flow rating: 115 CFM. Water-lift rating: 87"; Pump PSI: 44. Tank capacity: 2.4 Gal.; Noise level: 68 db(A).

756100105-EA

ea



## Karcher® BRC 30/15C Self Contained Extractor

Offers superior cleaning performance and innovative technology in durable, easy-to-use design. Brush assist drive system. Floating brush deck. Vacuum motor: 1.5 hp. Air flow rate: 100 cfm; Waterlift: 100";. Solution pump: 58 psi; Solution/Recovery tank: 4/4.5 gal.

756008058-EA

ea



## Karcher® Armada BRC 40/22 C Extractor

The only self-contained walk behind extractor to allow for forward movement. Steerable extractor head provides excellent maneuverability in any direction. Cleaning width: 16"; Solution capacity: 6 Gal. Recovery capacity: 5 Gal.; Water lift: 120"; PSI: 70. Flow rate: 0.65 gpm; Cord length: 50'.

7561008060-EA

ea



## Karcher® BRC 38/30C Self Contained Extractor

Will quickly subdue dirt and grime from your carpets with minimal effort and at a very affordable cost. Extremely rugged rotocast chassis and tanks. Vacuum motor: 1.5 hp three stage bypass. Air flow rate: 100 cfm; Waterlift: 120". Solution pump: 73 psi; Solution/Recovery tank: 8/8 gal.

756008053-EA

ea



## Karcher® BRC 46/76W Self Contained Extractor

Offers superior cleaning performance and innovative technology in durable, easy-to-use design. Self-propelled design for operator productivity. Vacuum motor: 3 stage, bypass, 1.5 hp. Air flow rate: 100 cfm; Waterlift: 120";. Solution pump: 100 psi; Solution/Recovery tank: 20/20 gal.

756008650-EA

ea



## NaceCare™ AV4X Upright Spotting Extractor

Rugged two piece roto molded polyethylene. Power 1.3 hp vacuum motor with 2 year warranty provides excellent water recovery. Vacuum Motor: 1,000 W, 1.34 Hp, 2 stage. Power Supply: 120 v/60 Hz. Pump Type: Solenoid.

756AV4X-EA

4 Gal.

ea



## NaceCare™ Tempest TP4X Box Extractor

Sturdy, dependable machine that is great for small extraction work. Constructed in top quality rotationally moulded polyethylene. Vacuum Motor: 1,000 W, 1.3 Hp, 2 stage. Power Supply: 120 v/60 Hz. Pump Type: Solenoid.

756TP4X-EA

4 Gal.

ea

# Cleaning Equipment



756TP8X-EA

## NaceCare™ Tempest TP8X Box Extractor

Sturdy, dependable machine that is great for small extraction work. Constructed in top quality rotationally moulded polyethylene. Vacuum Motor: 1,000 W, 1.3 Hp, 2 stage. Power Supply: 120 v/60 Hz. Pump Type: Diaphragm with bypass.

8 Gal.

ea



756AV12QX-EA

## NaceCare™ AV12QX Quiet Self-Contained Extractor

Runs at less than 60 dB(A) so it is great for use in noise sensitive areas such as hospitals, hotels, nursing homes and 24 hour facilities. Vacuum Motor: 1,250 W, 1.7 Hp, 3 stage. Brush Motor: 100 W, 0.13 Hp. Power Supply: 120 v/60 Hz.

12 Gal.

ea



756AV18AX-EA

## NaceCare™ AV18AX Automatic Carpet Extractor

A self contained automatic that can easily be transported from place to place, site to site, with no special equipment - in a van or even a car. Vacuum Motor: 3 stage, 1.7 Hp. Drive Motor: 3/4 Hp. Brush Motor: 1.1 Hp.

18 Gal.

ea



756TP18SX-EA

## NaceCare™ Tempest TP18SX Box Extractor

Designed to deliver optimum power, performance and convenience. Top quality rotationally moulded polyethylene tank. Vacuum Motor: 1,250 W, 1.7 Hp, 3 stage. Pump Power: 100 W. Pump Type: Diaphragm with bypass.

18 Gal.

ea



756TP18DX-EA

## NaceCare™ Tempest TP18DX Dual Motor Box Ext

Designed to deliver optimum power, performance and convenience. Top quality rotationally moulded polyethylene tank. Vacuum Motor: 2 - 1,000 W, 1.3 Hp, 2 stage. Pump Power: 100 W. Pump Type: Diaphragm with bypass.

18 Gal.

ea

## Floor Machines



7599007334

## Nobles® Single Speed Floor Machines

Superior performance with low maintenance. With a dramatically-simplified design, and a heavy-duty 1.5 hp motor, this single speed floor machine requires little maintenance while delivering superior cleaning and maintenance results. Simple twist grip operation with safety lock to protect operators. This durable floor machine is a proven performer for polishing, scrubbing and stripping most any hard floor surface. Made from durable, corrosion-proof polyethylene. Motor: 1.5 hp, 12 A, 1100 watts, 120 V. Power Cord: 50', 14 gauge, 3-wire, SJT.

20" Dual Speed

ea



## Karcher® BDS Line Floor Machines

This rugged floor machine is built to endure the rigorous demands of commercial cleaning. A large 66 frame, capacitor start, capacitor run 1.5 HP induction motor will endure decades of heavy duty usage. Power is delivered to the floor through an extremely rugged, high quality, precision cut triple planetary gear-case engineered for years of reliable service. The cast aluminum base is many times tougher than plastic or stamped metal competitor models. Other features include large 5" non-marking wheels, thumb activated safety interlock, heavy duty handle, non-marking bumper and an easy to access 15 amp circuit breaker. Die cast aluminum motor base and handle housing. 1.5" cold rolled steel and non-marking PVC grips. Dual main switch levers. Motor: 1.5 hp single speed, 175 rpm. Electrical: 115V, 60 Hz.

759840469-EA

17"

ea

759840472-EA

20"

ea



774DP420-EA

## NaceCare™ DP420 Duplex Hydrowasher

The Duplex DP420 is an extremely effective carpet cleaning machine. 1,000 W, 1.3 Hp brush motor.

14"

ea

## Pressure Washers



77411073370.EA

## Karcher® G3100 XH Pressure Washer

Powered by a Honda® engine, and delivers 3100 PSI of TruPRESSURE™, ensuring you get the highest level of cleaning power. Flow rate (max): 2.4 GPM. High pressure hose: 25'; Cylinder capacity: 187 cc. Maximum water inlet temp: max 122° F.

ea





774K1120T-EA

## NaceCare™ Kranzle 1120 T

A 1200 PSI and a flow rate of 2.1 GPM. Comes complete with a Dirt Killer nozzle and a Vario nozzle for adjustment of spray fan. All valves are stainless steel. Motor: 110-120 V, 1.5 Hp, 13.0 amps. Pump: Brass. Max. Temperature: 140 degrees F.

ea



774512565-EA

## Karcher® DE4002 Commercial Steam Cleaner

Provides unparalleled chemical free cleaning and sanitizing of even the most difficult surfaces and items. Weighs only 17 lbs. Voltage: 110 v. Steam Pressure: 46.4 psi; Steam Temperature 248° F. Water Reservoir: .63 gal.; Steam Chamber Reservoir: .63 gal.

ea

## Specialty Equipment



823050500-EA

## KaiVac® 500 PSI OmniFlex™ Spray-and-Vac System

No touch cleaning system built for extreme soil removal. It empowers workers to clean hygienically without touching contaminated surfaces. 500 psi.

ea



769701927-EA

## KaiVac® OmniFlex™ Dispense-and-Vac System

OmniFlex™ can be easily transformed into a high-performance Dispense-and-Vac system, simply add the optional OmniFlex™ Wet/Dry Vac to the Trolley-Bucket. Dump/Drain hose: 22". Vac Tank Cleanout: 100% via dump/drain hose. Vac CFM: 60 cfm; Blow feature: 85 mph; Vac motor lift: 114".

11.5 Gal.

ea



769701976-EA

## KaiVac® KaimotionFlex 10 Gallon Trolley Bucket

Variable flow spigot dispenses fresh solution. Pour spouts and rim for easy dumping into toilets. Built-in tool holders around the rim. Self-dispensing solution bucket.

ea



762006707-EA

## Karcher® B 60/10 C Eco! Productivity Configuration Automop

Greater productivity, maintenance free auto mop. Five times as productive as a mop and bucket. Leaves floor dry, reducing slip 'n' falls. Hygienic system only uses clean water to scrub floor. Pad working width: 24"; Vacuum working width: 25". Fresh water/waste water tank: 2/2.5 Gallons.

ea



759841236-EA

## Karcher® BDS 43/DUO C All Surface Floor Cleaning Machine

Orbital technology provides superior cleaning for all surfaces. Includes integrated chemical sprayer. Working width, brush: 17"; Motor VAC/Hz: 110/60. Fresh/Dirty water tank: 3 gal./3 gal.; Brush speed: 80 rpm. Theoretical performance ft<sup>2</sup>/h: 3000 carpet/7500 hard floor.

ea



774092804-EA

## Karcher® DE4002 Commercial Steam Cleaner

Clean and sanitize without chemicals. Removes rust, scale and dirt from most surfaces. Variable steam volume. Voltage: 110 v. Steam Pressure: 46.4 psi; Steam Temperature 248° F. Water Reservoir: .63 gal.; Steam Chamber Reservoir: .58 gal.

ea



7748025134-EA

## NaceCare™ Jet Steam 1600C Vapor Cleaner

Incorporates stainless steel welded boilers ensuring consistent steam pressure. The pump is connected to the water reservoir for a constant supply of water. Boiler Size: 1.25 Qt. Boiler Capacity: Unlimited, Water Reservoir: 4 quarts. Steam Pressure: 65 psi, Steam Temp.: 240 degrees F.

ea



759811357-EA

## Long Handle Motor Scrubber™

Includes scrubber head & handle, backpack & battery, 5 ft. coil cord, padholder, an assortment of the most popular interchangeable "twist-lock" scrub brushes, battery charger, and complete operating instructions and warranty. Battery provides up to 4 hours of "start & stop" use on a single charge. Cleans where there is no electricity! Compact and portable for all those hard-to-reach spots! Scrubber head is immersible in water! Lightweight (only 3 lbs.) w/comfortable "soft-grip" handle. 12-volt rechargeable backpack battery (only 6 lbs.).

48" Telescopic

ea

# Cleaning Equipment



## Nobles® QuickClean 12 Multi-Surface Cleaner

15 gallon capacity, variable 400-1200 psi, 25' vacuum and solution hoses. 2-40' hospital grade safety yellow electrical cords. ETL (US/C) certified to UL & SCA standards. A combination of simple features and power delivers exceptional cleaning results restoring your tile and grout and other hard surfaces. CRI silver certified with optional Titanium wand. Designed to be the smart choice, allowing the operator to spend more time cleaning than setting up, tearing down, and moving between job sites. Built to last under the toughest cleaning environments. Vacuum max waterlift: 137". Autofill and dump.

10314700  
7749011459-EA

w/Vac & Solution Hoses ea  
w/Tool, Vac & Solution Hoses ea



## PRO-LINK® Transport Cleaning System™

Touchless system designed for daily cleaning of restrooms, shower rooms, locker rooms, and many other areas. Increases productivity by 30%. Offers fast and efficient cleaning of all areas in a restroom, even the overlooked, hard to reach areas, such as under the sinks. Easy to use: spray, rinse, and squeegee dry. The TCS is a battery-powered system, offering longer battery life with no hassle of cords or locating electrical outlets. Compact size allows the unit to fit through most doorways. Its 12 gallon tank holds enough water to clean 8 restrooms. With a 20 foot supply hose, Pro-Link's TCS provides ample length for cleaning an entire area with minimal movement of the unit.

774SP7015-EA

Unit w/Battery Meter ea

## Sweepers



## Karcher® KM 75/40 W Battery Vacuum Sweeper

The smoothest running sweeper-vac on the market today. Whisper quiet and powerful, superior engineering assures outstanding cleaning results. Power: 2 x 12V battery, 400 watt; Main broom length: 21.6". Main broom dia: 10.4"; Sweeping method: overthrow. Hopper size: 10.5 gallons; 56.3" L x 29.5" W x 36.6" H.

774512603-EA

28" ea



## Nobles® Scout™ 3 Manual Walk-Behind Sweeper

Well suited for indoor and outdoor cleaning. Manual operation makes it the perfect option for noise-sensitive environments. Main brush length: 20". Side brush dia: 13"; Main brush dia: 7.8". Debris hopper volume capacity: 1.8 ft3.

774607971-EA

34" ea



## Nobles® Scout™ 5 Walk-Behind Sweeper

The 24" sweeping path is perfect for tight spaces and sweeping around clothing racks or retail displays. Brush speed: 390 rpm; Main brush length: 16". Side brush diameter: 12"; Debris hopper volume: 1.3 ft3. Battery w/charge on board: 12 V AGM.

7741071118EA

24" ea



## Nobles® Scout™ 9 Walk-Behind Sweeper

Propel system makes cleaning quick and effortless. Dual side brushes increase the sweeping path to 35". Sweeping system: TwinMax™ technology. Hopper capacity: 2.2 ft3; Drive type: Gear motor. Batteries: 105 AH, 12V w/on-board charger.

774611680-EA

35" ea



## Karcher® KM 70/20 C Compact Sweeper w/Dust Control

Lightweight and simple for quick clean ups. Ideal for sweeping small areas indoors and outdoors. Roller broom driven via both wheels. Working width: 18.8"; Drive: manual. Working width w/1 side broom: 28". Sweeping method: Direct throw; Waste container: 11 Gal.

774517106-EA

ea



## Karcher® KM 70/30C Battery-Powered Vacuum Sweeper

Produces powerful sweeping and vacuum action to control litter and extremely fine dust on hard floor surfaces, sidewalks, parking lots, indoor commercial carpet. Sweeping method: dustpan; Hopper size: 11.09 gallons. Main broom length: 18.89"; Side broom dia.: 13". 12 volt, 26AH batteries.

774512556-EA

28" ea

# Cleaning Equipment



## Karcher® KM 90/60 R Bp Ride On Sweeper

An economical and fast cleaning sweeper with large tank capacity and outstanding sweeping performance. 20A charger. Power 251 AH batteries; Operating speed: 3.72 MPH. Sweeping method: overthrow; Hopper size: 2 x 7.9 gal. Main broom length: 24"; Side broom diameter: 16".

10294900

36"

251AH

ea



## Karcher® KM 100/100R Bp Battery Ride On Sweeper

High productivity sweeping and total dust control, budget-friendly price. Large cylindrical filter effectively contains the toughest dust imaginable. Hopper size: 2 x 13.2 gallons; Main broom length: 27.55". Weight: 1190 lbs; Sweeping method: overthrow. (4) 330AH batteries.

7749512498

40"

ea

## Back Pack Vacuum



## Nobles® Aspen™-6 Backpack Vacuum w/Base Tool Kit

An ergonomic Deuter® hiking harness designed to decrease muscle fatigue and maximize operator comfort and mobility. True HEPA 4 stage filtration. Vac motor: 1200W, 10 amps, 1.6 hp; CFM: 111. Waterlift: 119"; Capacity: 6 qt.; Electrical: 120V. Power cord: 50', yellow.

7539013477-EA

6 Qt.

ea



## Karcher® BV 11/1 Back Pack Vacuum

Light weight combined with high suction performance. A comfortable padded harness, low noise level, easy to reach on/off switch, heat transfer insulation. Vacuum motor: 1.7 hp, 1295 watts; Air flow: 112 CFM. Waterlift: 104"; Vacuum hose: 5', 1.5" dia. Filtration: 4 stage; Weight: 11 lbs; Noise level: 67 dBA.

753840514-EA

10 Qt.

ea



## NaceCare™ RSV130 Backpack Vacuum

Hip Hugger™ backpack vacuums let you cover a lot of ground with superb vacuuming efficiency. 1,100 W, 1.5 Hp, single speed. Capacity: 1.5 Gal.

753RSV130-EA

ea



## NaceCare™ RSV200 Backpack Vacuum

Hip Hugger™ backpack vacuums let you cover a lot of ground with superb vacuuming efficiency. 1,100 W, 1.5 Hp, single speed. Capacity: 2.5 Gal.

753RSV200-EA

ea



## ProTeam® CoachVac Backpacks

Powered with a motor that has been rigorously tested for decades, the CoachVac is a defining standard for many commercial cleaners who rely on its extreme durability, exceptional filtration and unparalleled product performance. 859 watt/7.5 amp motor. Weighs 11 lbs. 75" static lift, 124 cfm airflow.

753100643-EA

w/101336 Attachment Kit

ea



## ProTeam® Super CoachVac Backpacks

Available with various attachments. The most powerful backpack vacuum available comes equipped with all the tools and accessories to tackle the most demanding cleaning challenges. Airflow: 150 cfm.

753106289-EA

w/101336 Attachment Kit

ea



## ProTeam® Super Coach Pro® 6 Backpacks

Triangular shape combined with innovative articulating harness has resulted in a vacuum that feels more like a part of your body. Weight of backpack is distributed to the natural center of gravity, so you have better balance no matter how you move. The die-cast aluminum tri-latch system assures air performance. Four level filtration with HEPA captures 99.97% of particulates 0.3 microns or larger, improving IAQ. Four Level Filtration w/HEPA: 1054 sq in total area. Includes 1 1/2" static-dissipating vacuum hose, a 50' extension cord and two intercept Micro® filters. Intercept Micro Filter Media: 6 Qt. Airflow: 159 CFM; Static lift: 96". Power: 1108 W; Amperage: 9.5 A. Motor: Single, 120V; Decibel: 65.8 dBA.

753107310-EA

w/107100 Attachment Kit

ea



## ProTeam® Super QuarterVac Vacuums

Available with various attachment kits. The lightweight Super QuarterVac combines the power of the Super CoachVac in a smaller body size. Four level filtration 791 sq in total area. Weight: 10 lbs.; Intercept Micro Filter: 496 sq in/6 qt. Airflow: 150 CFM; Static Lift: 100"; Decibel: 67 dB. Power: 1221W; Amperage: 10.6A.

753106205-EA

w/101336 Attachment Kit

ea



## ProTeam® Super QuarterVac HEPA Backpack Vacuums

Available with various attachment kits. The quality built Super QuarterVac HEPA is a formidable tool for battling poor indoor air quality. Motor: 1221 watt/10.6 amp. Airflow: 150 CFM; Static lift: 100". Intercept Micro™ filter media: 496 sq in.

753106577-EA

w/101336 Attachment Kit

ea

# Cleaning Equipment



753101550

## ProTeam® TailVac® Vacuums

Available with various attachment kits. Four-level Filtration™, 496 sq in. intercept Micro Filter media, 781 square inch total media. Includes a 3' to 1' stretch vacuum hose. Weighs 8 lbs; 112 CFM airflow. 50' power cord and two micro filters.

w/101336 Attachment Kit

ea



765105732-EA

## ProTeam® QuietPro® BP

With Quiet Power Technology™ it delivers high performance for environments where low sound levels are critical. 1 1/2" static dissipating vacuum hose. 50' extension cord. (2) replacement intercept micro filters.

w/101336 Attachment Kit

ea

## Battery Vacuum



7681236915-EA

## Nobles® Independence Battery Light-Weight Upright Vacuum

Combining an ultra-light vacuum with lithium ion technology. An upright lightweight vacuum without cords! No more hassles with cords or looking for outlets. Vacuum motor watts: 153W; Vacuum motor amps: 3.5A. Vac motor type: Single stage, thermal protected, direct air. Power: 44VDC/2.9 ah lithium ion battery.

13"

ea



768198254-EA

## Karcher® VC 4i Handheld Cordless 2-In-1 Stick Vacuum

Powerful, easy cleaning. Perfect for everyday cleaning, from floors to rugs to overhead areas. HEPA filter. Weighs only 4 pounds! Outstanding suction power. Up to 60 minutes of run time when operated in Eco Mode. Full set of attachments for cleaning all around the home.

ea



774545121-EA

## Karcher® EB 30/1 Cordless Electric Broom

For fast clean-ups, any time. Designed for daily use. Whisper-quiet electric broom for discrete and quick interim cleaning. Working width: 12"; Container capacity: .26 gallon. Noise level: 56 dBA; Battery charge time: 12 hours. Weight: 5 lbs.; Dimensions: 9.8" L x 11.8" W x 43.3" H.

ea

## Tank & Canister Vacuum



7651231417-EA

## Nobles® Tidy-Vac® 3e Dry Canister Vacuum

Easy to use with enhanced cord management, strain relief, and standard HEPA filter.

Compact, lightweight design allows for easy transportation. Vacuum motor: 120V; Vacuum bag capacity: 2.9 Gal. Vacuum hose: 6.6'; Airflow: 70.41 cfm; Waterlift: 25 kPa. Power cord: 39'; Sound level: 68 dBA at operators ear.

2.9 Gal.

ea



7651244294-EA

## Nobles® Denali-10 Compact Dry Canister Vacuum

Compact and easy-to-use choice for maneuvering in small spaces. Lightweight design. Wand parking position and cable hook. Cleans carpets and hard floors. Waterlift: 63"; Airflow: 61 CFM; Power: 700 watts. Voltage: 120V; Usage: Dry; Weight: 9 lbs. 13.1" L x 13" W x 13" H.

2.6 Gal.

ea



7651244302-EA

## Nobles® Denali-12 Standard Dry Canister Vacuum

Multi-stage filtration including cloth filter, fleece bag and downstream foam filter. Cleans carpets and hard floors. Waterlift: 89"; Airflow: 92 CFM; Power: 840-900 watts. Voltage: 120V; Usage: Dry; Weight: 13.9 lbs. 15" L x 15.4" W x 13" H.

3.2 Gal.

ea



7651244322-EA

## Nobles® Denali-16 Premium Dry Canister Vacuum

Multi-stage filtration including cloth filter, fleece bag and downstream HEPA cartridge. Cleans carpets and hard floors. Quiet, high-performing vacuum. Waterlift: 89"; Airflow: 92 CFM; Power: 840-900 watts. Voltage: 120V; Usage: Dry; Weight: 14.3 lbs. 15.7" L x 16.5" W x 14.4" H.

4.2 Gal.

ea



818355127-EA

## Karcher® T 12/1 Dry Canister Vacuum

Comes standard with a fleece filter bag which allows up to 3x higher filter volume than a paper filter bag. CFM: 130; Waterlift: 98"; Power: 1.7 HP. Standard nominal width: 1.25"; Cord: 40'. Sound pressure level: 65 db(A).

3 Gal.

ea



# Cleaning Equipment



765355228-EA

## Karcher® T 15/1 Dry Canister Vacuum

Whisper quiet and extremely powerful. A heavy duty foot operated on/off switch was designed for rigorous usage. Vacuum motor: 1.75 Hp; Air flow: 129 CFM. Waterlift: 98"; Power cord: 50'; Sound level: 59 dB(A). Hose length & diameter: 8.2' x 1.25"; Weight: 17.8 lbs.

3.9 Gal.

ea



765838387-EA

## NaceCare™ Henry PVR200 Vacuums w/Kits

Manual crank rewind for power cord storage and protection. Polypropylene tanks for maximum durability and mobility. Thermal overload for long term motor protection. Microtex/Permatex + HEPAFLO standard filter. Excellent 0.3 micron filtration at 99.97% efficiency. Autosave feature automatically starts the vacuum on low power. Powerful 1.6 hp vacuum motor for excellent soil recovery and longer carpet life. 3 year warranty. Motor provides 110" waterlift and 114 CFM of airflow. 2 stage; 2 speed; 33' power cord.

2.5 Gal.

w/A1 Kit

ea



765838685-EA

## NaceCare™ Henry PPR240 Vacuums

The design of the PPR series has lead to significant advances in energy consumption as well as overall vacuum performance. They consume 40% less energy than previous models while improving performance by 20%. This is all thanks to the 680 watt vacuum motor with a 2000+ hour life. 84% soil recovery. Tapered hose is convenient and provides improved performance. Ergonomic ratchet wand that adds up to 6" in length. Manual crank rewind for power cord storage and protection. CRI approved and LEED-EB compliant. Excellent 0.3 micron filtration at 99.97% efficiency for improved indoor air quality. Polypropylene tanks for maximum durability and mobility. Motor watts: 680W; Motor HP: 0.9 hp; Motor stages: 1. Airflow: 120 CFM; Waterlift: 100"; Power Cord: 33'.

2.5 Gal.

w/AST1 Kit

ea

## Upright Vacuum



7681068028-EA

## Nobles® V-LWU-13 Light-Weight Upright Vacuum

Standard with HEPA 2-stage filtration for improved air quality. Certified Gold by the Carpet and Rug Institute's (CRI) Seal of Approval program. Vacuum motor: 1.6 hp, single stage, thermal protected. Vacuum motor: direct air, 6 amp. Waterlift at sealed orifice: 71"; Power cord length: 50'.

13"

ea



7689007484

## Nobles® V-SMU-14 Single Motor Upright Vacuum

Major components have been proven in commercial applications for over 10 years. Easy operator serviceability with no-tool brush and belt replacement. Vac motor: 1.6 hp, single stage, thermal protected, 1200 W. Vac motor amps: 10 A; Water lift at sealed orifice: 89". Brush motor: 0.25 hp; Brush height: automatic, self-adjust.

ea



7681068027-EA

## Nobles® V-DMU-14 Dual Motor Upright Vacuum

Major components have been proven in commercial applications for over 10 years. Easy operator serviceability with no-tool brush and belt replacement. Vac motor: 1.6 hp, single stage, thermal protected, 1200 W. Vac motor amps: 10 A; Water lift at sealed orifice: 65". Brush motor: 1.85A; Brush height: automatic, self-adjust.

ea



768023113-EA

## Karcher® CV30/1 High Performance Upright Vacuum

High-suction, low handle weight upright vacuum for commercial carpet cleaning duties. Features include a unique closure system for dust-free bag changes. Vacuum motor: 2 stage, 1150 watt (max). Air flow: 101.7 CFM; Water lift: 81.5"; Cord: 39.3'. Filter bag capacity: 1.45 gal.; Weight: 18.5 lb.

12"

ea



768435109-EA

## Karcher® CV38/1 High Performance Upright Vacuum

High-suction, low handle weight upright vacuum for commercial carpet cleaning duties. Features include a unique closure system for dust-free bag changes. Vacuum motor: 2 stage, 1150 watt (max). Air flow: 101.7 CFM; Water lift: 76"; Cord: 39.3'. Filter bag capacity: 1.45 gal.; Weight: 18.5 lb.

15"

ea



768033810-EA

## Karcher® CV38/2 High Performance Upright Vacuum

Proven ruggedness combined with potent suction power cuts cleaning time. Low profile easily reaches under furniture and beds. Vacuum motor: 2 stage, 1200 watt. Brush motor: 150 watt; Air flow: 101.7 CFM. Waterlift: 100"; Cord length: 39.3'; Filter: 1.45 gal.

15"

ea

# Cleaning Equipment



768057324-EA

## Karcher® CV48/2 CUL Upright Vacuum

A lightweight, twin-engine machine with 19" working width which combines high suction power with a direct motor driven brush.

19"

ea



7681500XP-EA

## ProTeam® ProForce® 1500XP Upright Vacuum

The dual motor system and exhaust filters made from HEOA media maximize efficiency and effectiveness. L-shaped head perfect for under and around furniture. Watts: 924; Weight: 18 lbs.; Airflow: 96 CFM. Static Lift: 84"; Amps: 10 A dual motor. Capacity: 3.25 qt.

15"

ea



768541150-EA

## Hoover® Hushtone™ 15+ w/Intellibelt Upright Vacuum

Full indicator. Performance check indicator. 40' serviceable pigtail cord. HEPA filtration. 99.97% filtration efficiency. 8' stretch hose. Gray. Rinseable filtration. Comfort grip handle. 10 amps, 12 volts, 1200 watts; brushroll shutoff. 4 level height adjustment, 15" nozzle width.

ea



768200200-EA

## Oreck® Commercial 8 Pound Upright Vacuum

12" wide cleaning head covers a wider area and leaves no center dirt path. Clear, non-marring bumpers. Fingertip-controlled on/off switch. Cord guard prevents cord damage. Giant 630 cubic inch top fill bag capacity. Easy-use carry handle allows for simple, sturdy carrying.

12"

ea



768SC785AT-EA

## Sanitaire® SC785 Dual Motor Upright Vacuum

This compact, two-motor upright allows you to shut off the motorized brush roll to move from carpet to bare floor cleaning. Handle folds down for storage. 6.5 amp motor; 780 watts; 78 CFM; 12" cleaning path. Allergen disposable dust bag; dust capacity: 3 dry qts. 30' power cord; CRI Green Label certified.

ea



768SC886E-EA

## Sanitaire® SC886 Shake Out Bag Upright Vacuum

Can handle a huge 18 quart volume. High capacity ability with reengineered, long-life motor that is built to last for many years. Motor: 7 amp, 840 watts, 145 CFM. Cleaning path: 12"; UL listed for commercial use. Dust capacity: 18 dry qt.; Power cord: 50'.

18 Qt.

ea



768SC5815B-EA

## Sanitaire® SC5815 HEPA Upright Vacuum

Improve the indoor air quality while vacuuming. Includes a washable HEPA filter that captures dust and allergen particles down to .3 microns in size. 12" L x 15" W x 44" H. Motor: 10 amp; Cleaning path: 15". Dust capacity: 4.45 dry qt.

ea



768SC5845-EA

## Sanitaire® SC5845B Quiet Clean HEPA Upright Vacuum

Offers the ultimate in bagless filtration with its clean-air system. Includes a washable HEPA filter that captures dust and allergen particles. 69 dB per ASTM. 40' power cord; Clog resistant tools on board. Motor: 10 amp; Cleaning path: 15"; Extra large dirt cup. Dust capacity: 3.5 dry qt.; CRI Green Label certified.

ea



768SC9180B-EA

## Sanitaire® SC9180 Quiet Clean® Upright Vacuum

Durable, versatile, easy-to-use and easy to maintain. Two-motor system. Convenient attachments make carpet, bare floor and above the floor cleaning effortless. 11.5 amps; 119 CFM, 50' quick change cord. 4 dry quart dust capacity, disposable dust bag. Sealed HEPA filtration, 9' reinforced stretch hose.

ea



768CR5128Z-EA

## Royal® Commercial Metal Upright w/14" Zip Bag

Features all metal construction, 10.0 amp motor, 14" nozzle, Infinite screw height adjustment, 9-blade metal fan, commercial quality urethane wheels. 50 ft., 3-wire SJT cord. Carpet and Rug Institute™ Certified Silver. UL® Certified.

ea

## Wide Vacuum



768608231-EA

## Nobles® V-WA-26 Wide Area Vacuum

This wide area vacuum delivers outstanding water lift and vacuum performance due to its dual motor system design and ensures debris pickup and clean carpet. Vacuum motor: 1 hp. Water lift at sealed orifice: 48". Power cord: 75', 14 gauge, 3-wire, STJ safety yellow.

26"

ea



7681068029-EA

## Nobles® V-WA-30 Wide Area Vacuum

This durable wide area vacuum cleans large carpeted areas with nearly four times the productivity over traditional upright vacuums. Vac motor: (2) 1 hp motors 12.6A/1512W. Brush motor: 0.25 hp, 1800 rpm. Vacuum bag capacity: 1.6 bushel; Power Cord: 75'.

ea

## Wet/Dry Vacuum



### Nobles Wet-Dry Vacuums

High-performance wet-dry vacuums. Large volume durable tanks and strong motors help with managing large cleaning tasks or flooded conditions. Robust, lightweight handle along with two rear wheels and 2 front swivel wheels allow for easy maneuvering. Innovative head gasket provides strong seal even vacuuming oily or chemical residues. No loss of airflow during suction. Sealant floater and integrated anti-foam system detects and blocks liquids when tank is full, protecting the system and ensuring maximum safety. The Model V-WD-24P has a powerful submersible pump suitable for draining flooded areas, emptying tank and emergency services.

7651244345-EA	9 Gal.	ea
7651245656-EA	24 Gal.	ea
7651244346-EA	24 Gal. w/Pump	ea



### Karcher® NT 35/1 Wet/Dry Vacuum

Dependable, trouble-free operation. TACT (Trigger Air Draft Cleaning Technology) filter system allows for continuous fine and coarse dust retrieval. No need to shut the unit down for filter cleaning. Vacuum Motor/AMPS: 1,265 watt (max.) x 1/8 amps. Air flow rating: 120 CFM; Water lift rating: 88".

765184854-EA	9.2 Gal.	ea
--------------	----------	----



### Karcher® NT 48/1 Wet/Dry Vacuum

Dependable, trouble-free operation. TACT (Trigger Air Draft Cleaning Technology) filter system allows for continuous fine and coarse dust retrieval. No need to shut the unit down for filter cleaning. Vacuum Motor/AMPS: 1,200 watt (max.) x 1/10 amps. Air flow rating: 141 CFM; Water lift rating: 80".

765428623-EA	12.6 Gal.	ea
--------------	-----------	----



### Karcher® NT 68/1 Squeegee Vacuums

Offers efficient water pick-up with its front-mounted and self adjusting squeegee assembly. Available in 3 configurations to meet nearly any need. Its innovative tip-free design provides 100% dumping of the large 18-gallon tank for ease of operation use. Ergonomically designed with large rear wheels, two swivel casters and durable powder-coated handle. The ideal tool for frequent water pick-up. 18 gallon capacity offers easy mobility for medium to large jobs. Vacuum motor: 10 amps; Waterlift: 80"; Cable: 50'. Max power rating: 1.8 hp; Air flow rate: 142 cfm.

765103494-EA	Squeegee/Hose/Wand	ea
--------------	--------------------	----



765WV570-EA

### NaceCare™ WV570 Wet/Dry Vacuum

Delivers durable wet or dry operation in a compact, powerful unit. 1,200 W, 1.6 Hp motor. Capacity: 6 Gal.

ea



### NaceCare™ WV900 Wet Vacuums

Excellent 0.5 micron filtration at 98.60% efficiency for improved indoor air quality. Ball float wet shut-off assembly ensures water does not reach the motor and vapor barriers can be added to eliminate moisture completely. Structural foam tank comes complete with a 10 year warranty. Structural foam head material is rustproof and durable with a 10 year warranty against defects. Equipped with a dump tube that permits quick and convenient emptying to a floor drain. Unique tip and pour system allows the tank to be emptied even when a floor drain is not present. For wide area cleaning can be fitted with a 29" front mounted squeegee kit. Does not include an NVM 16B dry filter. Powerful 1.6 hp vacuum motor w/two year warranty provides excellent dry soil or wet recovery. Motor provides 110" waterlift and 95 CFM of airflow. Vacuum motor Watts/HP: 1,200 W, 1.6 Hp. Vacuum motor stages: 2. Capacity: 12 Gal.

765899784-EA

w/C2 Kit

ea



765WV900-EA

### NaceCare™ WV900 Wet/Dry Vacuum

Powerful 1.6 hp vacuum motor w/two year warranty provides excellent dry soil or wet recovery. 1,200 W, 1.6 Hp. Capacity: 12 Gal.

ea



### NaceCare™ WVD902 Wet Vacuums

Excellent 0.5 micron filtration at 98.60% efficiency for improved Indoor Air Quality. Unique tip and pour system allows the tank to be emptied even when a floor drain is not present.. Equipped with a dump tube that permits quick and convenient emptying to a floor drain. The structofoam head material is rust-proof and durable with a 10 year warranty against defects. Ball float wet shut-off assembly ensures water does not reach themotor and vapor barriers can be added to eliminate moisture completely. Does not include an NVM 16B dry filter. Powerful dual 1.0 hp vacuum motors w/two year warranty provides excellent dry soil or wet recovery. Vacuum motor watt: 2 x 800W. Vacuum Motor HP: 2.14 HP Total. Vacuum motor stages: 2 stage; Speeds: 2.

765WVD902-EA

w/BS7 Kit

ea

# Cleaning Equipment



## ProTeam® ProGuard™ 10 Wet/Dry Vacuum

Durable construction and powerful performance. With a heavy duty, 2 stage motor and commercial grade tools and hose, it will keep working in the toughest jobs. Motor: 1380 watt, 9.5 amp; Airflow: 105 CFM. Tank Size: 10 gallon; Weight: 35 lbs. Fine Dust Cartridge Filter: 1276 sq in; Power Cord: 50'.

765107129

w/107187 Attachment Kit

ea



## ProTeam® ProGuard™ 15/20 Wet/Dry Vacuums

Power and versatility are combined with innovation in the ProGuard 15 and 20 wet/dry vacuums. The unique variable wheel pattern allows for increased maneuverability and improved productivity while offering the performance, filtration and durability you expect from a ProTeam vacuum. Also available in a 20 gallon size. Available with front mount squeegee. Powerful 2 stage bypass vacuum motor can efficiently handle the toughest wet or dry worksite cleanup tasks and replace the endless mop/bucket tasks. Motor: 1380 watt, 9.5 amp; Airflow: 105 CFM. Static Lift: 95". Fine Dust Cartridge Filter: 1276 sq in; Power Cord: 50'.

765107130

15 Gal.

ea



## ProTeam® ProGuard® 16 MD Wet/Dry Vacuum

Fast and easy liquid debris removal from either the tip and pour spout or the convenient drain hose. Commercial grade tools remove dirt, water and sludge. Motor: 1380 W, 9.5A; Airflow: 105 CFM. Static Lift: 95"; Weight: 29 lbs. Power Supply: 50' power cord, 16 AWG.

765107386-EA

16 Gal.

ea

## Vacuum Bags & Accessories



## Janitized® 2 Ply Paper/Meltblown Micro Filter Bag

For Panasonic Type U, U-3 & U-6. 12/3 packs.

833200200-PK

12/3/cs



## Janitized® 2-Ply Paper/Meltblown Micro Filter

Fits Hoover Y, Pacific Steamex Scholar.

833JAN-HVY-PK

12/3/cs



## Janitized® 2-Ply Paper/Meltblown Micro Filter For Oreck

Fits: XL and CC uprights, XL7™ XL211™, 2000, 3000, 4000, 8000, 9000 series vacuum cleaners. Bag will fit on new bag dock or old style machine.

671JANORXLCC

10/8/cs



## NaceCare™ Paper Bags For NB200, NVR200, HVR200

10 per package.

850604015-PK

ea



## Janitized® 2-Ply Paper/Meltblown Micro Filter Vac Bag

N.A.C.E & Numatic Henry/James Vac bag for models 200, 225, 235, 250, 252, 260, RSV130/200. 10/10 pks.

833BA55301-PK

10/10/cs



## Janitized® Paper Meltblown Micro Filter

For Powr-Flite upright vacuum PF82HF and fits Eureka LiteSpeed Models 5700-5739 and 5800-5839 series vacuum cleaners. 2 Ply.

82061820-PK

12/3/cs



## Janitized® Paper Meltblown Micro Filter For Euroclean/Kent

For Euroclean Pro 14 and Model DU135 09 4105-01, 09410509 upright 2 motor vacuum. 2 Ply.

833400200-PK

10/10/cs



## Janitized® Paper/Meltblown Micro Filter Bag For Hoover Z

2 ply.

833JANHVVZ2-EA

10/10/cs



## Janitized® Taski Baby Bora 5L Vacuum Cleaner Bag

2-ply paper/meltblown micro filter.

833JANTABORA-PK

10/10/cs



## NaceCare™ Paper Bag For NVR375

10 per package.

850604016-BX

ea





8059007784-PK

1/12/cs

## Nobles® High-Filtration 3-Ply Paper Filter Bag For V-BP-6



8059007744-PK

PK

## Nobles® Vacuum Bags & Filters For V-SMU-14

12 bags and 2 filters.



8051067456-PK

1/10/cs

## Nobles® Paper Vacuum Bag



8059009765-PK

1/12/cs

## Nobles® Vacuum Bag

For Tidy-Vac 3 Canister Dry Vacuum and V3 Canister Dry Vacuum. 12 bags/2 filters per package.



8059009784-PK

1/12/cs

## Nobles® Vacuum Bag

For Tidy-Vac 6 Canister Dry Vacuum and V6 Canister Dry Vacuum.



860105691-EA

ea

## ProTeam® 18" Sidewinder Carpet Tool

Perfect for detailing spaces on low pile carpet baseboards, crevices, in-between office partitions and file cabinets. Only use with wand 105693 or 105695. 1 1/2" wand diameter.



827101613-EA

ea

## ProTeam® 20" JetSweep Hard Floor Tool w/Nylon Brush

Medium bristles for dust mop type of application. Large 20" cleaning path ideal for hallways, classrooms and in-between desks. 1 1/2".



825104217-EA

ea

## ProTeam® Drive Belt For Brush Roll

For the ProForce 1500XP HEPA and ProForce 1200XP HEPA.



827100331-PK

1/10/cs

## ProTeam® Intercept 10 Qt. Micro Filter w/Open Collar

Use with Super CoachVac® HEPA, CoachVac, MegaVac. Open collared making them easy to empty and reuse several times.



860100431-PK

1/10/cs

## ProTeam® Intercept 6 Qt. Micro Filter w/Open Collar

Use with Super QuarterVac HEPA, QuarterVac, TailVac, QuietPro BP HEPA, GoCartVac, AviationVac. Open collared making them easy to empty and reuse several times.



860103483-PK

1/10/cs

## ProTeam® Intercept Micro Filter Bags For ProForce

To safeguard the Indoor Air Quality of your facilities and to optimize the performance of your vacuum cleaner, change filters once they are half full. Has 21% more filtration area than non-pleated filters. Fully laminated inner liner eliminates shredding.



827107181-PK

1/3/cs

## ProTeam® Intercept Micro Filter For ProGuard Wet/Dry 10

Intercept Micro Filter bag helps you clean up dry debris such as sawdust or drywall dust while keeping the vacuum drum clean. Fits ProGuard Wet/Dry 10 Gallon. One pack of 3.



827107314-PK

1/10/cs

## ProTeam® Open Collar Intercept Micro Filter Bag

Filters are open collared, making them easy to empty and reuse several times. Fits Super Coach Pro® 6, GoFree Flex Pro, ProVac FS 6.

## Accessories



199300300-4L

4 L

4/cs

## Ice River Green Distilled Water

Distilled water for use in refilling lead acid batteries.

# Cleaning Equipment



## Trojan® 27TMH Deep-Cycle 12V Battery w/T2 Technology™

Trojan's deep-cycle flooded batteries are perfectly suited for use in a variety of floor machines. BCI group size: 27; Terminal type: 5, 7, 8, 9. Capacity minutes: @25 amps, 200; @75 amps, 51. Energy (kWh): 100-HR rate: 1.54.

81027TMH-EA

ea



## Trojan® J185EAC Deep-Cycle 12V Battery w/T2 Technology™

Trojan's deep-cycle flooded batteries are perfectly suited for use in a variety of floor machines. BCI group size: 921; Terminal type: 7, 9. Capacity minutes: @25 amps, 312; @75 amps, 82. Energy (kWh): 100-HR rate: 2.33; HydroLink.

810J185E-EA

ea



## Trojan® 27TMX Deep-Cycle 12V Battery w/T2 Technology™

Trojan's deep-cycle flooded batteries are perfectly suited for use in a variety of floor machines. BCI group size: 27; Terminal type: 5, 9. Capacity minutes: @25 amps, 175; @75 amps, 45. Energy (kWh): 100-HR rate: 1.40.

81027TMX-EA

ea



## Trojan® T-125 Deep-Cycle 6V Battery w/T2 Technology™

Trojan's deep-cycle flooded batteries are perfectly suited for use in a variety of floor machines. BCI group size: GC2; Terminal type: 1, 2, 3, 4. Capacity minutes: @25 amps, 488; @75 amps, 132. Energy (kWh): 100-HR rate: 1.60; HydroLink.

810T125-EA

ea



## Trojan® 30XHS Deep-Cycle 12V Battery w/T2 Technology™

Trojan's deep-cycle flooded batteries are perfectly suited for use in a variety of floor machines. BCI group size: 30H; Terminal type: 5, 7, 8, 9. Capacity minutes: @25 amps, 225; @75 amps, 57. Energy (kWh): 100-HR rate: 1.73.

81030XHS-EA

ea



## Trojan® T-145 Deep-Cycle 6V Battery w/T2 Technology™

Trojan's deep-cycle flooded batteries are perfectly suited for use in a variety of floor machines. BCI group size: GC2H; Terminal type: 1, 2, 3, 4. Capacity minutes: @25 amps, 530; @75 amps, 145. Energy (kWh): 100-HR rate: 1.72; HydroLink.

810T145-EA

ea



## Trojan® T-1275 Deep-Cycle 12V Battery w/T2 Technology™

Trojan's deep-cycle flooded batteries are perfectly suited for use in a variety of floor machines. Terminal type: 1,2; Capacity minutes: @25 amps, 280. Capacity minutes: @56 amps, 102; @75 amps, 70. Energy (kWh): 100-HR rate: 1.99; HydroLink.

810T1275-EA

ea



## Trojan® 6V-AGM Dual Purpose AGM Battery

Low temperature tolerant, shock and vibration resistant and have a low internal resistance for higher discharge current and higher charging efficiency. BCI group size: GC2; Terminal type: 6. Capacity minutes: @25 amps, 385. Energy (kWh): 100-HR rate: 1.33.

8106VAGM-EA

ea



## Trojan® 31-GEL 12V Deep-Cycle Gel Battery

Trojan's deep-cycle gel batteries are sealed, maintenance-free batteries that deliver superior power in demanding renewable energy applications. BCI group size: 31; Terminal type: 7. Capacity minutes: @25 amps, 200. Energy (kWh): 100-HR rate: 1.30.

81031GEL-EA

ea



## Trojan® 6V-GEL Deep-Cycle Gel Battery

Trojan's deep-cycle gel batteries are sealed, maintenance-free batteries that deliver superior power in demanding renewable energy applications. BCI group size: GC2; Terminal type: 6. Capacity minutes: @25 amps, 394. Energy (kWh): 100-HR rate: 1.19.

8106VGEL-EA

ea



## Trojan® 31-AGM 12V Deep-Cycle AGM Battery

Low temperature tolerant, shock and vibration resistant and have a low internal resistance for higher discharge current and higher charging efficiency. BCI group size: 31; Terminal type: 6. Capacity minutes: @25 amps, 177. Energy (kWh): 100-HR rate: 1.33.

810801076-EA

ea

## Nobles® Low Pressure Three-Jet Wand for Carpet Extractors

13" x 1.5".

805600048-EA

ea

**Tennant Brush Assembly Disk**

Polypropylene.

8051016811-EA

ea

**Motor Scrubber™ Medium-Duty Brush**

Floors, walls, steps & landings, kitchens, shower rooms, and restrooms. Especially-suited for cleaning stainless steel.

860ES421-EA

ea